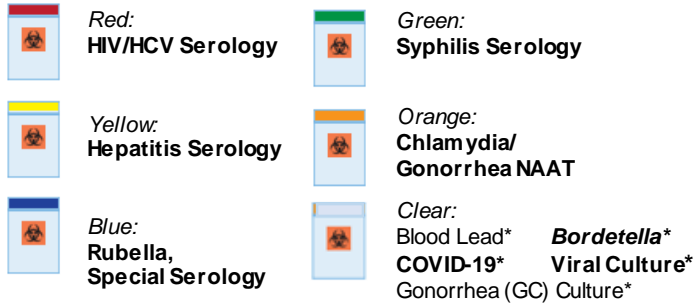


# NCSLPH Revised Specimen/Sample Packaging Guide: Medical Courier Shipping Effective 12/5/22

## BAGGED SPECIMENS

Specimen vials are packaged in color coded specimen bags.



**BOLD = COLD**

## CANNED SPECIMENS

Fragile specimens must be shipped in crush proof containers (cans).

Enteric Clinical\*  
**Legionella** Clinical  
Microbiology Reference Cultures\*  
**Mycobacteriology** Sputum\*  
**Mycology** Clinical  
Parasitology\*  
Environmental bacteriological samples

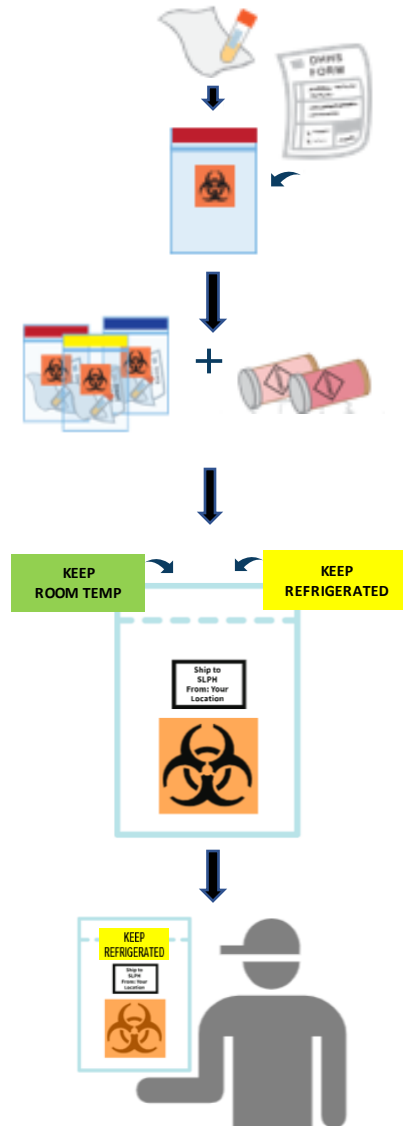
**BOLD = COLD**

## BOXED SPECIMENS

Frozen specimens on **dry ice**  
Environmental boxes – no change in packaging

**Rabies** – continue to ship using MSC state courier

\*Supplies available through NCSLPH



-Place each specimen and absorbent material in its own color-coded bag.

-Fold and slide completed requisition into pouch on bag.

-Place same temperature specimens / samples into the large courier bag.

-Add the appropriate temperature label to the large courier bags.

-Store courier bags at appropriate temperature (cold or room temp) until courier pick up.

-Pay careful attention to the scheduled pick-up time.

-Courier will pick up specimens / samples from LHD contact upon arrival.

**-All packaging should be ready at assigned pick up time.**

## SHIPPING QUESTIONS?

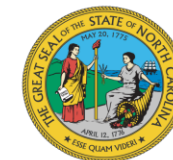
Refer to NCSLPH [SCOPE](#) Appendix A for shipping requirements.

## IMPORTANT REMINDERS

Use current NCSLPH submission forms:  
<https://slph.dph.ncdhhs.gov/forms.asp>

Frozen specimen should be stored in the freezer and packed on dry ice before courier arrives.

Rabies specimens will continue to be sent through the MSC state courier.



NC DEPARTMENT OF  
**HEALTH AND  
HUMAN SERVICES**

Division of Public Health  
State Laboratory of Public Health  
[www.slph.dph.ncdhhs.gov](http://www.slph.dph.ncdhhs.gov) · 11/16/22  
NCDHHS is an equal opportunity  
employer and provider.