

## PREPAREDNESS TRAINING FOR CLINICAL LABORATORIES

### Workshop focus:

- Biosafety
- Biosecurity
- Agents of Bioterrorism
- Laboratory Exercises



### Workshop courtesy of:

- Bioterrorism & Emerging Pathogens Unit
- Chemical Terrorism and Threats Unit
- Laboratory Improvement Unit
- Administration - Safety



### NC State Laboratory of Public Health's mission:

To provide certain medical and environmental laboratory services (testing, consultation, and training) to public and private provider organizations responsible for the promotion, protection and assurance of health of North Carolina citizens.

### Bioterrorism and Emerging Pathogen Unit's mission:

To maintain laboratory capacity for the detection of biological weapons and emerging infectious diseases and to act in a manner that strengthens crisis response within the Division of Public Health.

Bioterrorism and Emerging Pathogens Unit  
4312 District Drive  
1918 Mail Service Center  
Raleigh, NC 27699-1918  
919-807-8765 ph.  
919-715-1840 fax

<https://slph.dph.ncdhhs.gov/bioterrorism/default.asp>



State of North Carolina | Department of Health and Human Services Division of Public Health | North Carolina State Laboratory of Public Health | [www.ncdhhs.gov](http://www.ncdhhs.gov) | NC DHHS is an equal opportunity employer and provider. 2/17

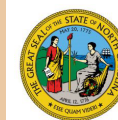
## PREPAREDNESS TRAINING FOR CLINICAL LABORATORIES



**APRIL 25, 2024**  
**SEPTEMBER 19, 2024**  
**DECEMBER 12, 2024**

**NORTH CAROLINA**  
**STATE LABORATORY OF**  
**PUBLIC HEALTH**

RALEIGH, NC

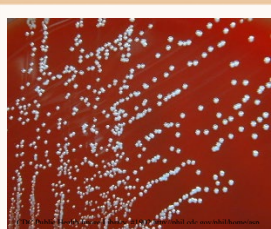


NC DEPARTMENT OF  
**HEALTH AND**  
**HUMAN SERVICES**  
Division of Public Health  
State Laboratory of Public Health

# PREPAREDNESS TRAINING FOR CLINICAL LABORATORIES



*Bacillus anthracis*

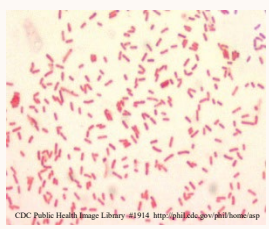


*Brucella* spp.

*Francisella tularensis*



*Yersinia pestis*



## PROGRAM DESCRIPTION

This intermediate level one-day program focuses on practical microbiological methods clinical laboratorians should use to recognize, rule out, and refer agents of bioterrorism. Laboratory presentations and demonstrations will provide the participants with up-to-date information on expected gram stain, culture, and biochemical characteristics of these agents. An emphasis on safety implications will provide the laboratorian with the knowledge needed to work with suspected clinical isolates. Participants will learn the procedure for referring suspect specimens and hear briefly about the confirmatory procedures performed at the NC State Public Health Lab, an LRN Advanced Reference Laboratory. Other topics covered include Biosecurity and Biosafety as well as Chemical Terrorism.

## REGISTRATION

Registration must be made by submitting the application found at

<https://slph.dph.ncdhhs.gov/labimprovement/labtraining.asp>

**This is now a FREE workshop for participants.**

Workshop materials will be provided.

On your own: Coffee, drinks, snacks, and lunch

This is a lab prep and cost intensive workshop to host. Currently, seating is limited to only 9 participants so please register with serious intent to attend. Please be considerate of your statewide laboratory partners as late cancellation/no show registrants would prevent others from experiencing this unique and limited workshop.

## CONTINUING EDUCATION

Continuing education contact hours will be awarded to all participants who successfully complete this program. The North Carolina State Laboratory of Public Health (NCSLPH) is approved as a provider of continuing education programs in the clinical laboratory sciences by the American Society for Clinical Laboratory Science P.A.C.E® Program.

## SPECIAL NEEDS

In compliance with the American Disabilities Act, individuals needing special accommodations should notify the Bioterrorism and Emerging Pathogens (BTEP) unit at least two weeks prior to the workshop by calling 919-807-8765.

## Lecture and Laboratory Demonstrations

- North Carolina Emergency Response Update
- Biosecurity/ Biosafety
- Chemical Terrorism
- *Bacillus anthracis*
- *Burkholderia mallei*, *Burkholderia pseudomallei*
- *Yersinia pestis*
- *Brucella* spp.
- *Francisella tularensis*

3.01.23

**Recognize. Rule-out.  
Refer...Safely.**